

# MONTHLY MEMBERSHIP PROGRESS REPORT

LOCATION WASHINGTON

District 19 D

Results as of: 6/30/2023

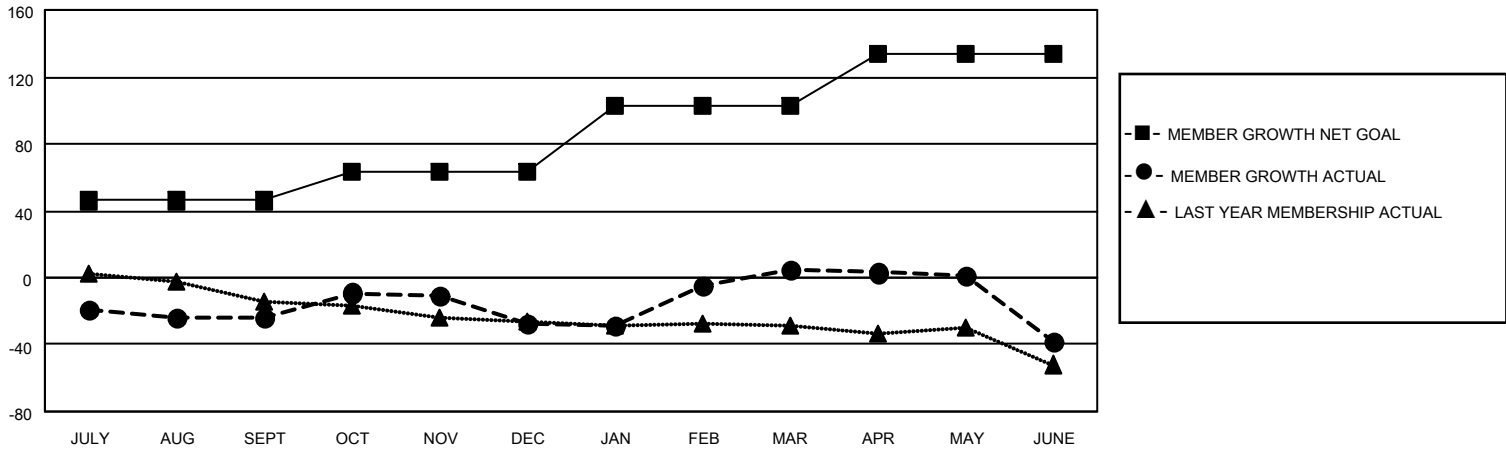
Clubs			
RESULTS FOR 2022-2023			
QUARTER	NEW CLUB GOAL	NEW CLUBS	DROPPED CLUBS
JULY/AUG/SEPT	0	0	1
OCT/NOV/DEC	1	0	1
JAN/FEB/MAR	0	0	0
APR/MAY/JUNE	0	0	2

Members			
RESULTS FOR 2022-2023			
QUARTER	MEMBER GROWTH NET GOAL	MEMBER GROWTH ACTUAL	DROPPED MEMBERS ACTUAL (including transfers)
JULY/AUG/SEPT	46	26	45
OCT/NOV/DEC	17	48	46
JAN/FEB/MAR	40	58	23
APR/MAY/JUNE	31	24	61

**GOALS AND ACTUAL NEW CLUBS CUMULATIVE**



**GOALS AND ACTUAL MEMBERS CUMULATIVE**



**DROPPED CLUBS: 4**

**31 CLUBS OF 45 ADDED 1 OR MORE NEW MEMBERS**

**GENDER DISTRIBUTION**

MALE	509 (52.10%)
FEMALE	468 (47.90%)
NON BINARY	0 (0.00%)
PREFER NOT TO ANSWER	0 (0.00%)

**DROPPED MEMBERS**

DECEASED	17
CLUB CANCELLED	24
OTHER	134
<b>TOTAL</b>	<b>175</b>

[CLICK HERE FOR CUMULATIVE MEMBERSHIP DATA](#)

TOTAL FAMILY UNIT MEMBERS	243
FAMILY MEMBERS PAYING HALF DUES	123